

This schematic shows a simple way how to interface and supply my AD9850 functiongenerator and an optional computer-interface is up to you.

TITLE: Example

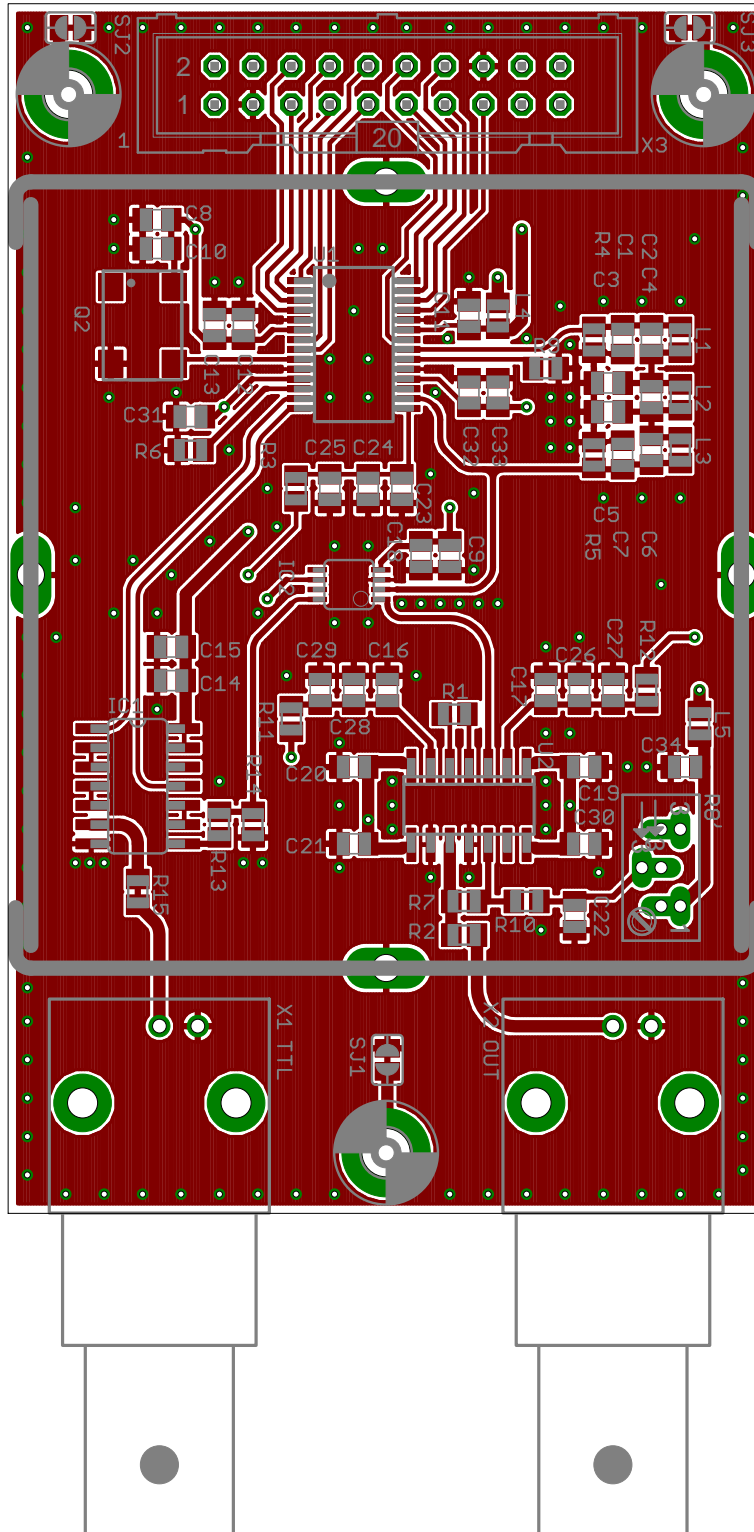
Document Number:

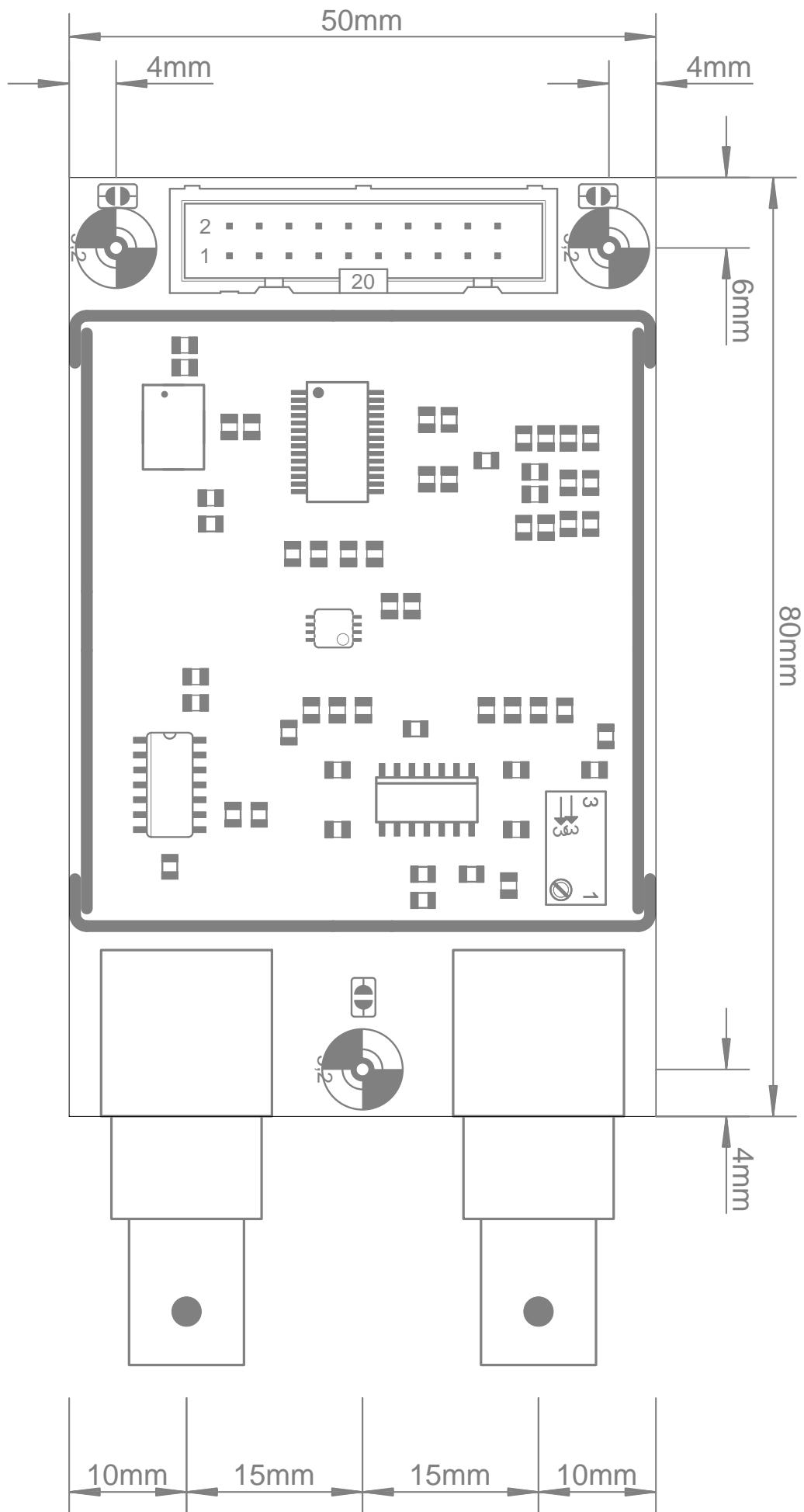
Date: 10.09.2015 20:12:08

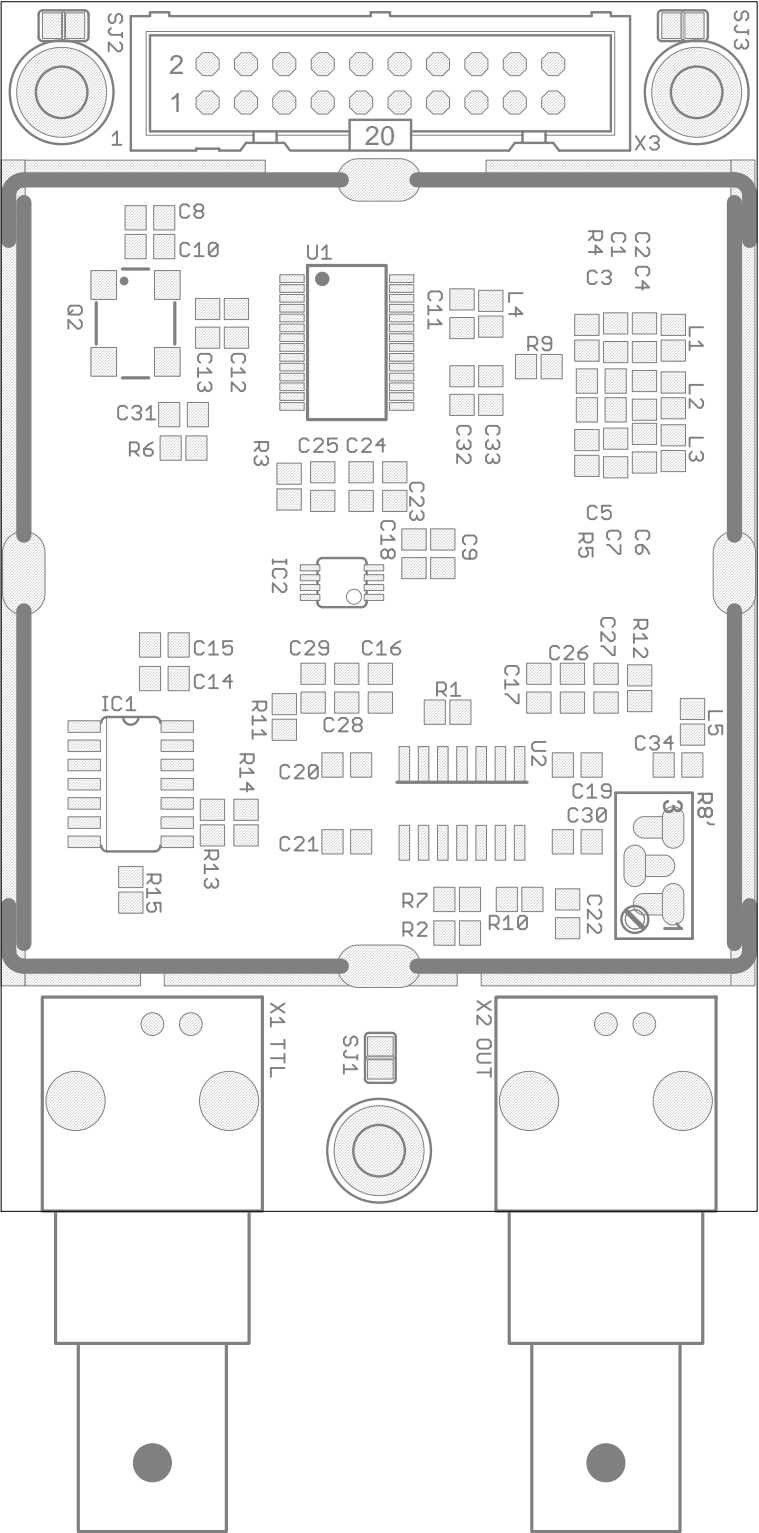
Sheet: 1/1

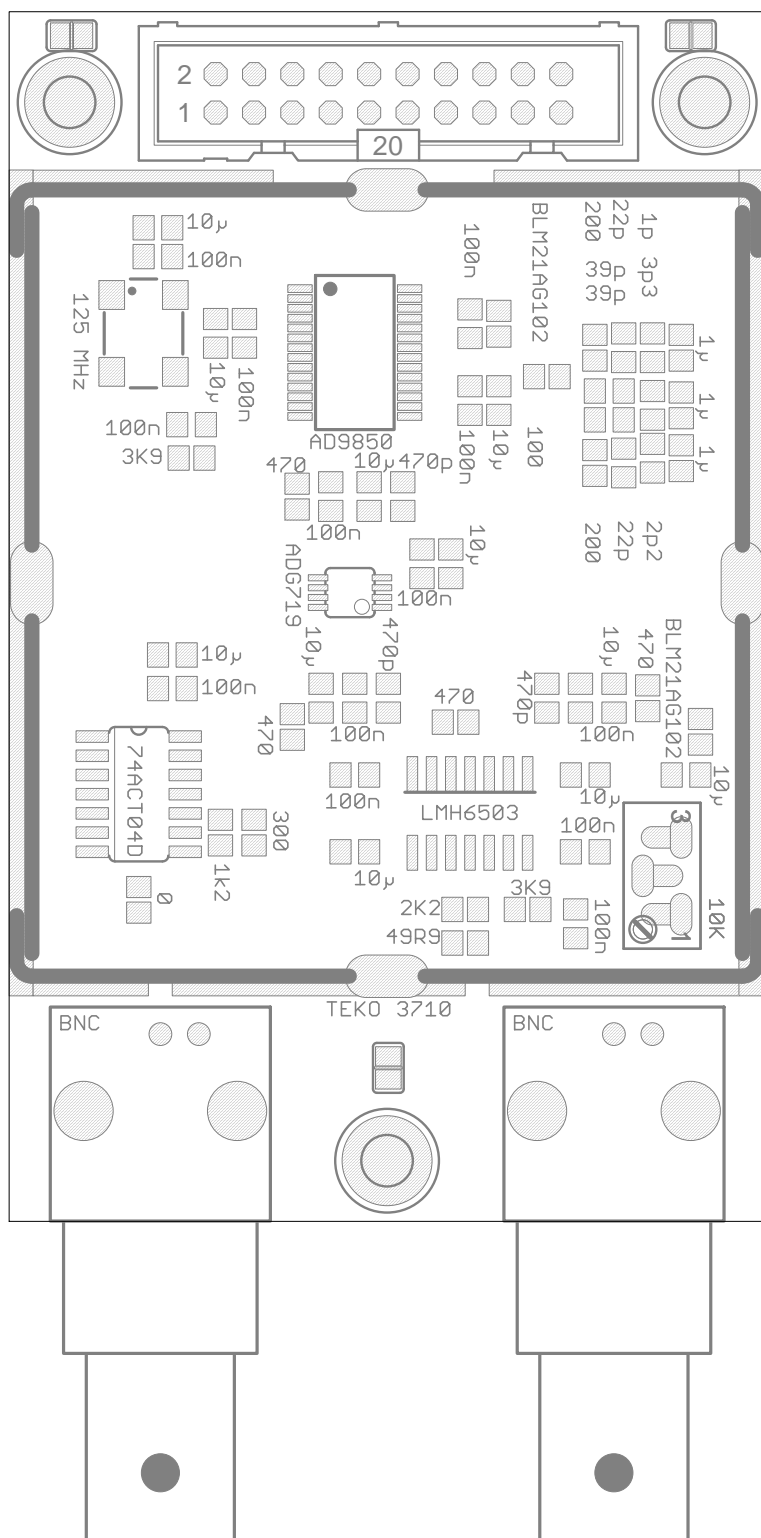
REV: 1

Maßstab aller Layoutzeichnungen: 2:1









AD9850 DDS-Funktionsgenerator
 Robert Steigemann 30.05.2015
 Rev.: 0.03

Pinout X3	
-5V	19
+5V	20
D7_SL	17
D6_SL	15
D4_UD	11
D3_UD	7
D1_GND	5
Wavef.	1
	2
	3
	4
	6
	8
	10
	12
	14
	16
	18
	20
	Gain
	+5V
	GND
	D5
	D5
	RESET
	CLK
	D2
	D0
	DutyC.
	Offset

19 20

X3

1 2

X2

X1

